

*Mendocino County Russian River Flood Control
& Water Conservation Improvement District*

STAFF REPORT

Agenda Item 10: Water Supply Conditions

Monday, July 7, 2025

The Strategic Plan relevant priorities are: **Security** through ensuring reliable, resilient, and available sources of water; **Advocacy** in support of equitable water resource stewardship; and **Use** of water in effective and beneficial ways as a public resource, all in alignment with the District’s Mission to steward water resources for the benefit of people and the environment.

Operations of the Trans-Basin Diversion Through PG&E Owned “Potter Valley Project”

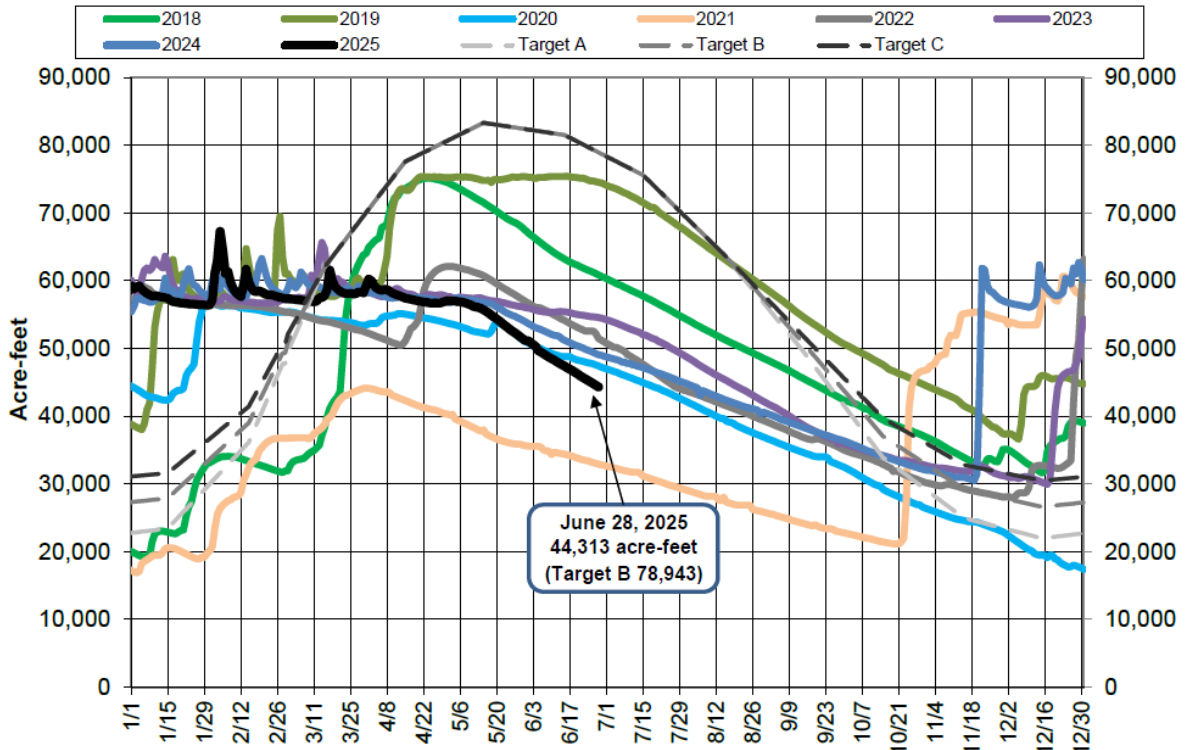
There are currently no Federal Energy Resources Commission (FERC) approved flow variances in place, though one has been filed and FERC received numerous comments, motions to intervene, and protests. See <https://rrfc.specialdistrict.org/pg-e-2025-potter-valley-project-operations> for more information. Minimum instream flow in the East Branch Russian River is currently 75 cfs.

Lake Pillsbury

6/28

Current Storage (acre-feet)	44,313
Target Storage Curve (acre-feet)	78,943
7-day change (acre-feet)	-1,638

Lake Pillsbury Storage and Target Storage Scenarios



(Continued...)

Lake Mendocino and the Mainstem Upper Russian River

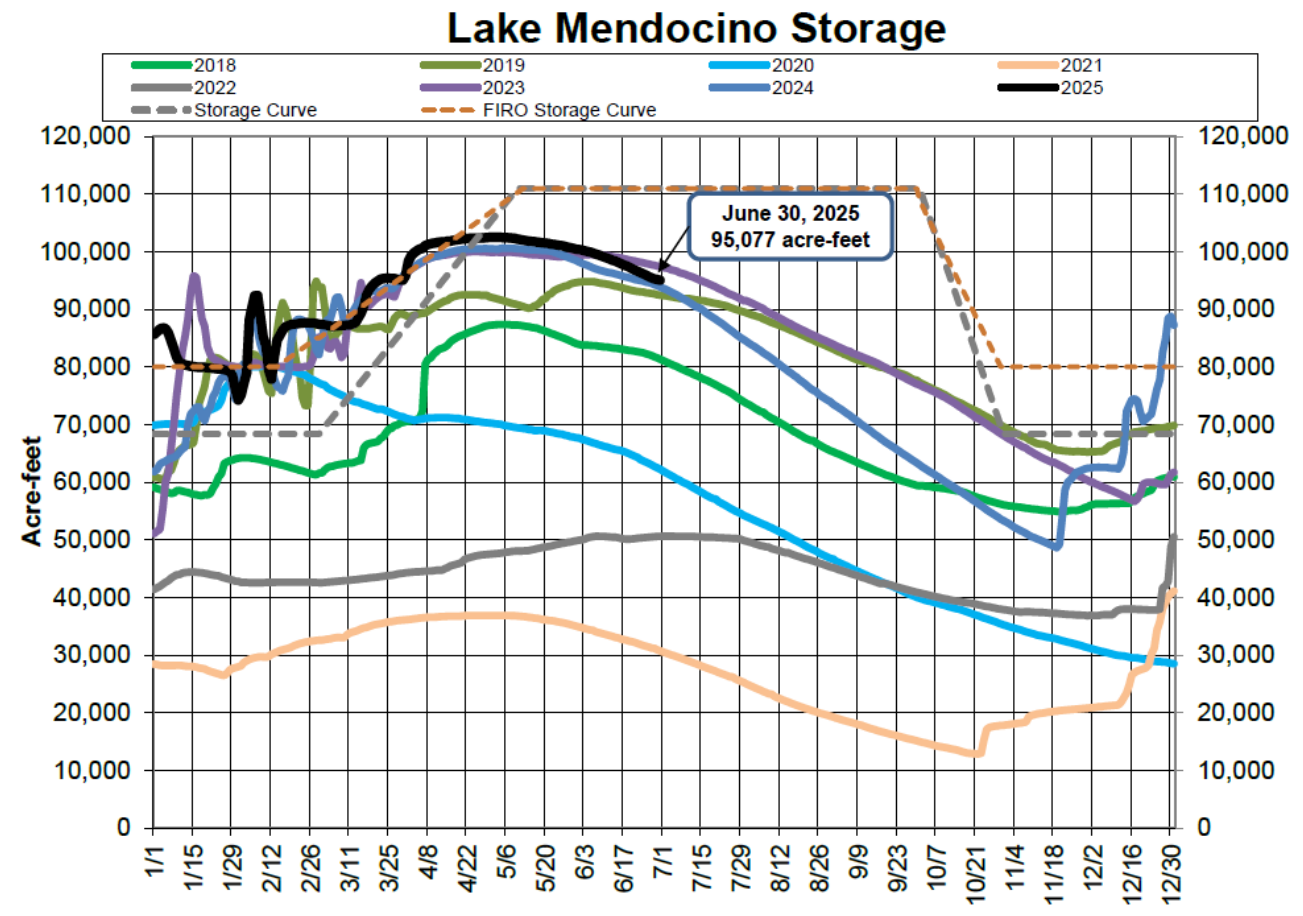
Storage level was 95,077 acre feet (af) as of June 30, 2025, down from 101,075 af on May 26, 2025.

Lake Mendocino

6/30

Current Storage (acre-feet)	95,077
FIRO Storage Curve (acre-feet)	111,000
% of FIRO Storage Curve	85.65%
7-day change (acre-feet)	-1,330

Sonoma Water Agency’s Temporary Urgency Change Petition (TUCP) filed on April 10th to the State Water Resources Control Board (SWRCB) was approved. (For more information see <https://www.rrfc.net/updates-on-russian-river-and-lake-mendocino> or Sonoma Water’s TUCP webpage: www.sonomawater.org/tucp.)



* * * *

Prepared and submitted to the Board of Trustees by: *Elizabeth Salomone, General Manager*